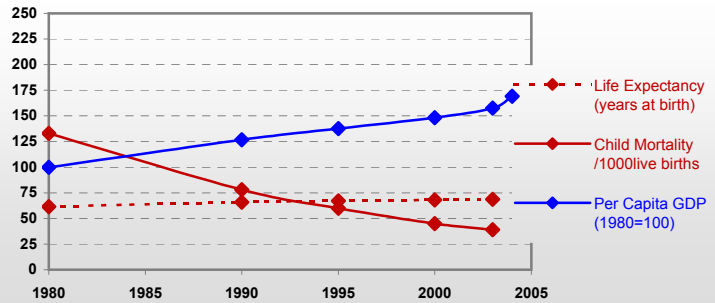


Turkey



General / Welfare

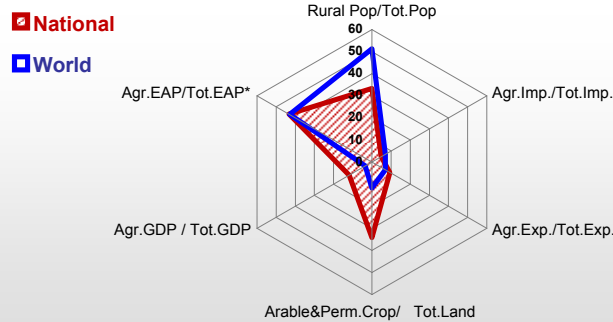
Population ^{04 *}	72 320
Per Capita GDP ^{04 **}	3 171
Agricultural GDP/Ag.Population ^{04**}	1 329
Total Exports ^{04 ****}	97 540
Total Imports ^{04 ****}	63 121
Agric. External Assistance ^{03 ***}	252 234
Food Consumption Inequality (G) ^{ly}	0.13
Income Inequality (G) ^{ly}	0.40
Land Inequality (G) ^{ly}	0.58
Undernourished Population % ⁰¹⁻⁰³	3



* 1000 ** \$ *** 1000 \$ **** Million \$ --- (G) : Gini Coefficient --- GDP at 2000 Constant Prices

Agriculture In The Economy^{ly}

Resources

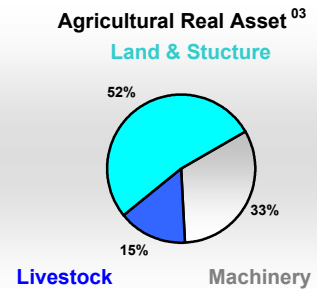
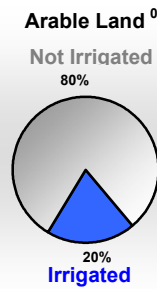
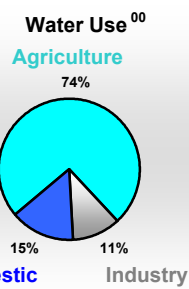
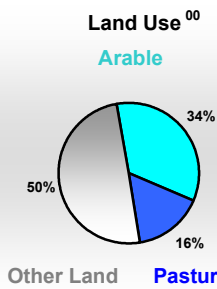


Arable Land ^{00 *}	23 826
Permanent Crops ^{00 *}	2 553
Pasture ^{00 *}	12 378
Cattle & Buffaloes ^{04 **}	9 902
Sheeps & Goats ^{04 **}	32 203
Tractors ^{03 / *}	43
Harvesters&Threshers ^{03 / *}	1
Fertilizers Production ^{02 ***}	935 772
Fertilizers Consumption ^{02 ***}	1 743 173
Rainfall Index ^{02 (mm)}	614

* EAP : Economically Active Population ---

* 1000ha ** 1000heads *** Tonnes N,P₂O₅,K₂O

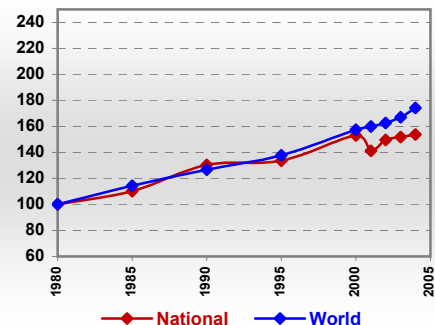
Resources Distribution



Production

Agriculture ^{04 *}		Forestry ⁰⁴	
Cereals	34 050	Indust.Roundwood **	11 225
Meat	1 583	Wood Fuel **	5 278
Fruits & Vegetables	36 046	Wood Charcoal *	-
Roots & Tubers	4 800	Sawn Wood **	6 215
Pulses	1 579	Wood Based Panels **	3 833
Oilseeds (oil equiv.)	1 589	Wood Pulp *	225
Sugar Crops	13 517	Paper, Paper Board *	1 643
Milk	10 679	Fisheries^{04 *}	
Eggs	770	Pelagic	414
Stimulants	202	Freshwater	70
Tobacco	157	Demersal	99
Fiber Crops	926	Molluscs	42

Agricultural Production Index



* 1000Tonnes ** 1000m³

Time reference=⁹⁹⁻⁰¹:1999-2001, ⁰⁰:2000, ⁰²:2002, ⁰⁰⁻⁰²:2000-2002, ⁰³:2003, ⁰⁴:2004, ^{ly}:Latest Available Year

Turkey

Trade ⁰⁴

Agricultural Imports *	4 659
% 4 Major Imports in Agr. Imp.	34
% Agr. Imports in Tot. Imports	5
Fishery Imports *	92
Forestry Imports *	1 362
Agricultural Exports *	5 958
% 4 Major Exports in Agr. Exp.	29
% Agr. Exports in Tot.Exports	9
Fishery Exports *	212
Forestry Exports *	238

* Million \$



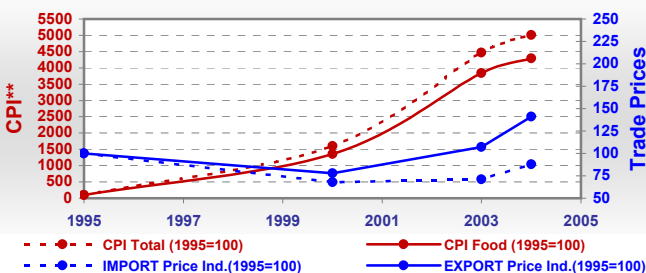
Trade Partners & Products

Major Import Partner	United States of A	Argentina	Greece
Major Exports Partner	Germany	Italy	Slovenia
Major Imports	Cotton lint	Skin with wool, shee	Soybeans
Major Exports	Hazelnuts, shelled	Tobacco	Prepared nuts

Prices

Producer Prices ⁰¹⁻⁰³	\$*	\$Green *
Wheat	171	131
Rice	375	285
Maize	174	132
Soybean	230	175
Coffee	-	-
Tobacco	2 189	1 669
Cow Milk	289	219
Cattle (Live Weight)	1 755	1 326
Pig (Live Weight)	-	-
Chicken (Live Weight)	3 713	2 823

Consumer and Agricultural Trade Price Indices

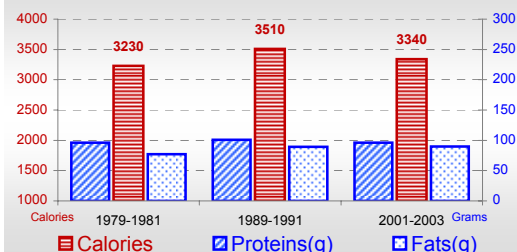


* per Tonne

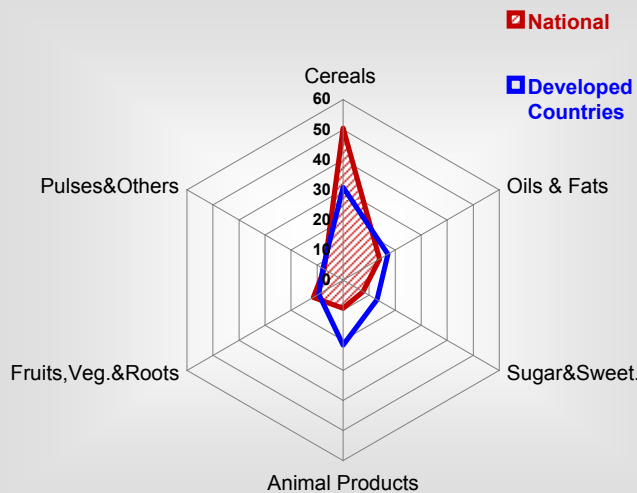
** CPI : Consumer Price Index

Consumption

Per Capita Daily Consumption



Source of Dietary Energy Consumption % ⁰¹⁻⁰³



Per Capita Daily Calorie Intake From Selected Food Items ⁰¹⁻⁰³

Rice	71
Wheat	1452
Maize	141
Sorghum	-
Potatoes	115
Cassava	-
Sugar	247
Soybean Oil	56
Palm Oil	86
Milk	176
Anim.Fats(Raw&Butter)	39
Eggs	37
Pigmeat	-
Poultry Meat	35
Bovine Meat	16
Sheep & Goats Meat	32

Food Balance ^{01-03 (1000Tonnes)}

Food Groups	Production (+)	Exports (-)	Imports (+)	Stock changes & Other uses (-)	Consumption (=)
Cereals	30 281	1 443	2 695	16 046	15 488
Veg.oils	910	225	792	226	1 250
Sugar&Sw.	2 116	515	36	-219	1 857
Roots&Tub.	5 167	105	62	968	4 157
Meat	1 396	25	1	0	1 372
Milk	9 505	29	84	1 790	7 770